

# FOR - N



## FOR-N Moulder for rolled bread


**New range of moulders, renewed in the ergonomics and functionality, suitable for producing all types of rolled bread, such as "banane", "mantovane", biove", kipfel", "maggiolini", "filoncini" and so on. The 4-cylinders models are particularly suitable for processing hard dough and/or strong flour.**

### Features

- Steel structure.
- Outer casing painted with dual cycle anti-corrosion treatment using epoxy powers (food contact). Thermoformed ABS lateral panels.
- Steel chromium-plated and rectified cylinders.
- 24 V low voltage electric control panel.
- Double anti-rejection device adjustable by means of a micrometric handwheel which enables to process two dough pieces at the same time.
- Upper belt stopping device which stops the rolling up process and allows to obtain the simple calendaring of portions.
- Electric power supply: V 400/3/50 Hz (different voltages on request).
- Performances: dough piece weight from 20 up to 1200 gr. approx.

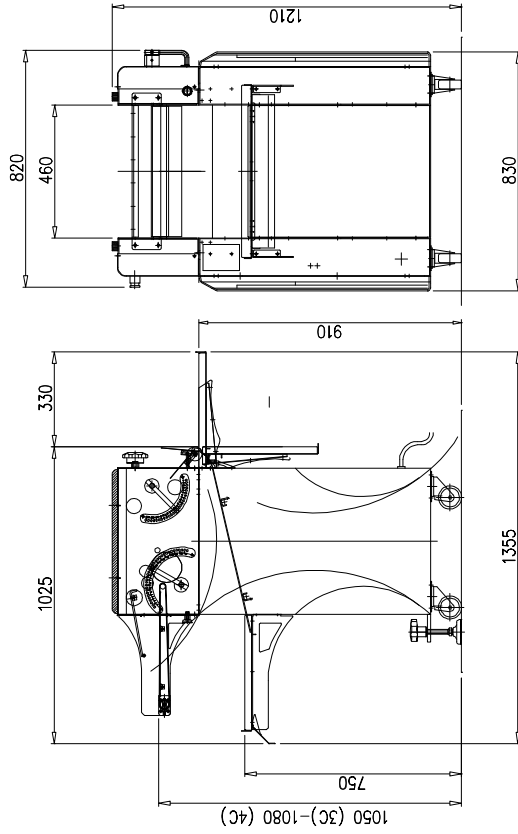
### Configurations - FOR-N moulders

- **FOR-N/3C** (with 3 cylinders) and **FOR-N/4C** (with 4 cylinders) designed for manual feeding, with piece return chute.
- **FOR-N/3CR** (with 3 cylinders) and **FOR-N/4CR** (with 4 cylinders) with lowered structure, lengthened feeding belt, without piece return chute, designed for automatic feeding with combination to Esmach volumetric dividers.

Machinery complies with regulations 

MODELS	Ref.	Description
<b>FOR-N/3C</b>	0N000102	<b>3 cylinder moulder</b> , manual feeding.
<b>FOR-N/3CR</b>		<b>Lowered 3 cylinder moulder</b> , designed to be coupled to Esmach volumetric dividers.
<b>FOR-N/4C</b>	0N000202	<b>4 cylinder moulder</b> , manual feeding.
<b>FOR-N/4CR</b>		<b>Lowered 4 cylinder moulder</b> , designed to be coupled to Esmach volumetric dividers.

FORMATRICE - FOR N 3C -FOR N 4C NOR09N002\_01  
 MOULDER - FOR N 3C - FOR N 4C 26/10/09

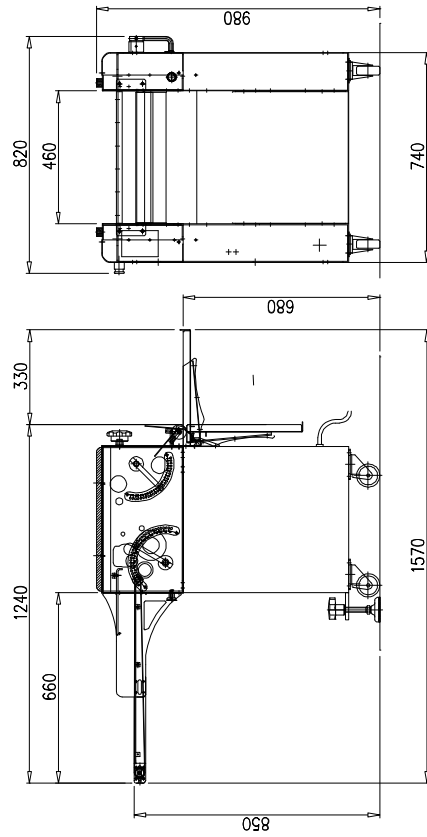


DATI TECNICI - TECHNICAL FEATURES

FOR N 3C-4C

POTENZA INSTALLATA - INSTALLED POWER	kW	0.75
POTENZA MAX ASSORBITA - MAX ABSORBED POWER	kW	0.75
PESO - WEIGHT	kg	210 (3C)-220 (4C)
VOLUME IMBALLO - PACKING VOLUME	m <sup>3</sup>	1
CONNESSIONE ELETTRICA-PLUG COUPLING		3PH+Gr

FORMATRICE - FOR N 3CR - FOR N 4CR NOR09N001  
 MOULDER - FOR N 3CR - FOR N 4CR 23/10/09



DATI TECNICI - TECHNICAL FEATURES

FOR N 3CR-4CR

POTENZA INSTALLATA - INSTALLED POWER	kW	0.75
POTENZA MAX ASSORBITA - MAX ABSORBED POWER	kW	0.75
PESO - WEIGHT	kg	200
VOLUME IMBALLO - PACKING VOLUME	m <sup>3</sup>	1
CONNESSIONE ELETTRICA-PLUG COUPLING		3PH+Gr



**ESMACH**

ESMACH SpA — 36040 Grisignano (VI) Italy Via V. Veneto, 143  
 tel. 0444 419777 fax 0444 419708 export fax +39 0444 419709  
 e-mail: commerciale@esmach.it - export e-mail: export@esmach.it  
 www.esmach.it