



AC Conical rounder


- The AC conical rounder is used to round portions of dough and prepare them for the subsequent operations.
- Dividing the dough, both manually and mechanically, causes the fibres to break along the cutting line. The intermediate rounding operation ""closes"" the portions, giving them a spherical form and, by recomposing the fibres, promotes uniform slackening of the dough, enhancing its workability.
- The conical rounder can be fed in line by SP and DVD volumetric dividers. The machine outlet is normally coupled to FE long moulders or ECP intermediate provers.

• Features

- Steel structure mounted on wheels.
- Outer casing painted with dual cycle anti-corrosion treatment using epoxy powders (food contact).
- Teflon-coated cast iron rotating cone with vertical or reticular grooving, depending on the characteristics and dimensions of the portions to process.
- Teflon-coated aluminium feed channels.
- Belt transmission system that guarantees reliability and quiet operation.
- Mechanical flour duster.
- Electrical power supply: V. 400/3/50Hz (different voltages on request).
-
-
-

Accessories

-
- **A:** Hot air-blower to facilitate the processing of particularly slack and sticky dough.
- **U:** Powered exit belt planned for coupling the conical rounder to other machines, especially to FE long moulders. Its application excludes the possibility to install the CF long moulding device.
- **CF:** Long moulding device mounted on the conical rounder structure including an adjustable pressing device suitable for the production of loaves max. 450 mm. long. Its application excludes the possibility to install the powered exit belt mod. U.
-

This machine complies  regulations.

MODEL	Description
AC/0	Conical rounder - Approx. dough piece weight from gr. 40 to gr. 50/200
AC/01	Conical rounder - Approx. dough piece weight from gr. 60/80 to gr. 300/400
AC/1	Conical rounder - Approx. dough piece weight from gr. 200 to gr. 1200
AC/3	Conical rounder - Approx. dough piece weight from gr. 400 to gr. 2300
AC/4	Conical rounder - Approx. dough piece weight from gr. 800/1000 to gr. 3000
AC/5	Conical rounder - Approx. dough piece weight from gr. 1200 to gr. 3600

OPTIONS

Model	Description
A	Option: hot air blower
U	Option: powered exit belt
CF	Option: long moulder with adjustable pressing device



Conical rounder with "A" hot air blower



Conical rounder with "U" powered exit belt



Conical rounder with "CF" long moulding device

SUMMING TABLE - PRODUCT REFERENCES

Model	Standard	+ A	+ U	+ CF	+ A + U	+ A + CF
AC/0	02422002	02422102	02422202	-	02422402	02422602
AC/01	02427002	02427102	02427202	02427302	02427402	02427602
AC/1	02433002	02433102	02433202	02433302	02433402	02433602
AC/3	02438002	02438102	02438202	02438302	02438402	02438602
AC/4	02442002	02442102	02442202	02442302	02442402	02442602
AC/5	02448002	02448102	02448202	02448302	02448402	02448602

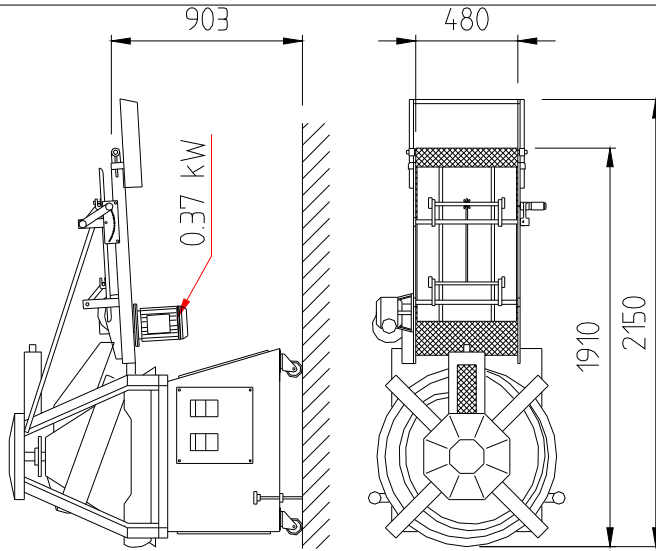
ARROTONDATRICE CONICA

CONICAL ROUNDER

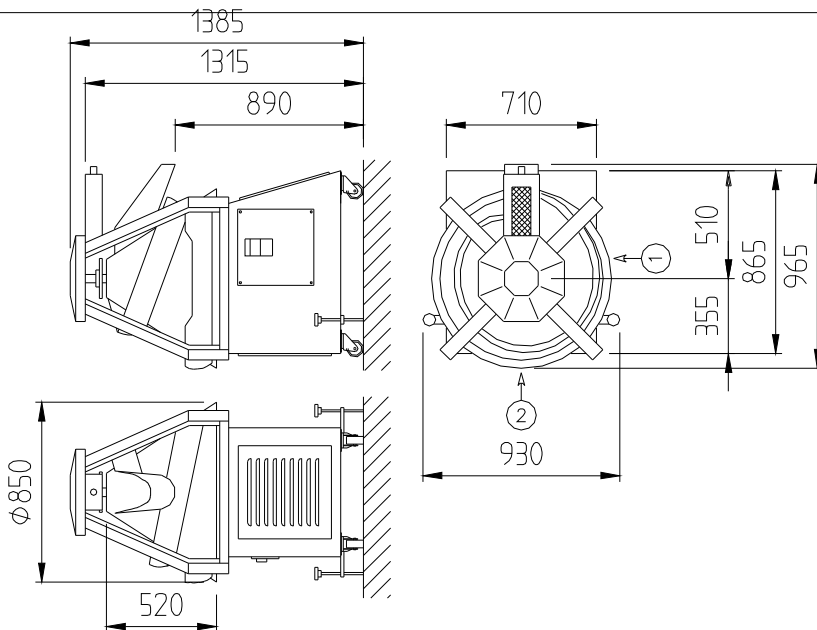
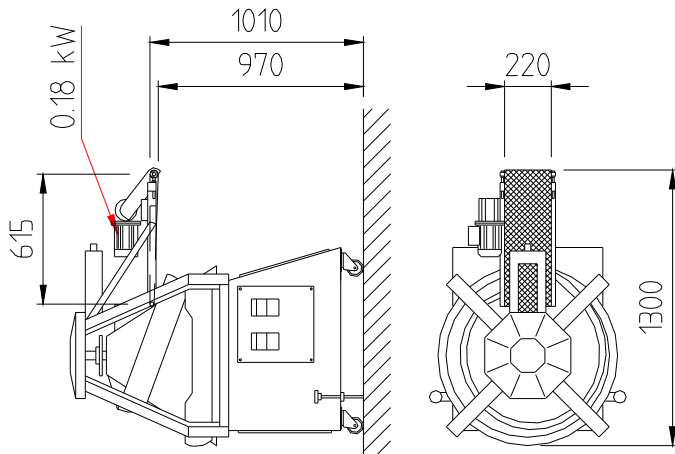
Macchine_2002/012

01/10/01

AC con filonatore "CF"
AC with moulder "CF"



AC-AC/P con tappeto uscita "U"
AC-AC/P with conveyor belt "U"



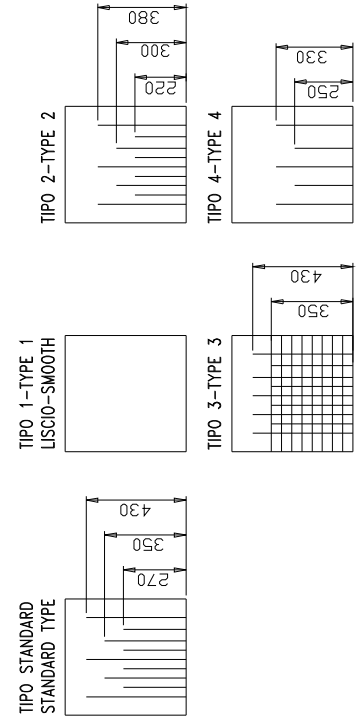
RIGATURE SU CONO - MARKS ON CONE

Gruppo aria calda "A"	Group warm air "A"
Ventilatore 0,18 kW	Fan 0,18 kW
Resistenza 0,50 kW	Resistance 0,50 kW

② LATI CARICO DA TERRA H=850
SIDE OF LOADING, HEIGHT=850

① N.B. I MODELLI DI CONICA AC/0 e AC/01
SI POSSONO CARICARE SOLO AL PUNTO ①

N.B. THE MODELS AC/0 AND AC/01 CAN BE
LOADED ON POS. ① ONLY.



Tipo	Pezzature in g Dough pieces g	Potenza Power	Peso Weight
AC/0	40	0.75	345
AC/01	60/80	0.75	345
AC/1	200	0.75	345
AC/3	400	1.1	345
AC/4	800/1000	1.1	345
AC/5	1200	1.1	345

CONNESSIONE ELETTRICA-PLUG COUPLING: 3PH+Gr