




## DVP Automatic volumetric divider with oscillating piston

**The DVP dividers are used to divide soft dough, also yeast-raised, into portions of variable weight and dimensions according to requirements.**

### • **Standard features and configuration**

- 
- Steel structure mounted on wheels.
- Thermoformed ABS casing.
- Stainless steel suction drum and piston.
- Stainless steel hopper (for combination or manual feed) – capacity 160 kg dough - with sliding protection grid. Ergonomic dough loading height at 1540 mm.
- Alimentary oil lubrication system, with recovery tray.
- Exit conveyor belt made of synthetic fabric, height-adjustable.
- Stainless steel flour duster at beginning of belt.
- Pre-selection piece-counter device.
- Work speed and dough portion weight mechanically adjustable via handwheels.
- Standard connection socket for intermediate prover.
- Electrical power supply: V.400/3/50 Hz (different voltages on request).

• This machine complies  regulations.

### • Performance:

- Work speed from 900 to 1800 pc/h
- DVP 4: dough portion weight from 100 g to 800 g
- approx. DVP 6: dough portion weight from 300 g to 1500 g approx.

### • **Options**

- C/AR – rounding device with shaped channels installed on conveyor belt, with right or left exit (the flour duster is installed at the end of the belt instead of at the beginning). N.B. applicable only on DVP 4.
- KIT/CD – start-stop remote controls.
- TR/100 100 kg hopper, manual feed only.

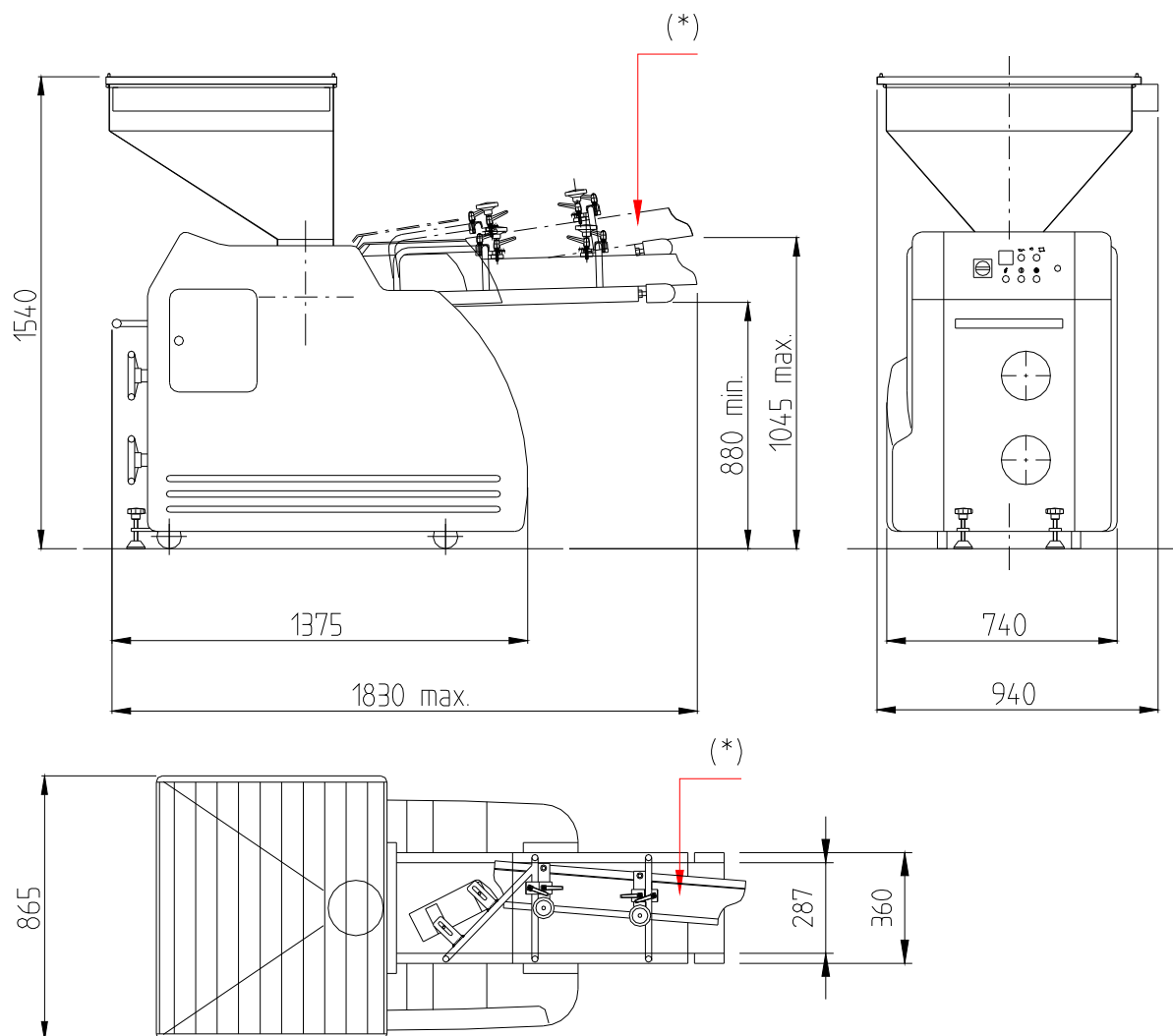
### • **Feed combinations**

- Self-tilting mixers ISE/FRA, MONOTWIN, TNSE/H with chute, elevators ESR/3M.

### • **Exit combinations**

- Rounders AC and AT, moulders FOR and FOR/S lowered version, long moulders FE, intermediate prover ECP (only DVP 4 with option C/AR).

SPEZZATRICE – DVP4, DVP6	Macchine_2002\048
DIVIDER – DVP4, DVP6	01/10/01



(\*) DISPOSITIVO ARROTONDATORE (IN OPZIONE)  
SHAPING DEVICE (OPTIONAL)

ABBINAMENTO PER IL CARICO (LATERALE o POSTERIORE) CON IMPASTI FINO A CIRCA 140 Kg FEEDING COMBINATIONS (SIDE OR BACK) UP TO APPROX. 140 Kg DOUGH WEIGHT	CAPACITA' TRAMOGGIA HOPPER CAPACITY
TNSE-H, SPIRAL-TH, TWIN, ISE FRA	160 Kg

ABBINAMENTO LATO SCARICO EXIT COMBINATIONS
AC/(tutte-all types), FE "EUROPA", FOR 3CR, FOR 4CR, ECP

DATI TECNICI – TECHNICAL FEATURES		DVP4	DVP6
PEZZATURE – PIECE WEIGHT	g	100 – 800	300 – 1550
POTENZA INSTALLATA – INSTALLED POWER	kW	1.5	1.5
POTENZA MAX ASSORBITA – MAX ABSORBED POWER	kW	1.5	1.5
CONNESSIONE ELETTRICA – PLUG COUPLING		400V-3PH+N+Gr-50Hz	400V-3PH+N+Gr-50Hz
PESO – WEIGHT	kg	615	615
VOLUME IMBALLO – PACKING VOLUME	m <sup>3</sup>	2.6	2.6